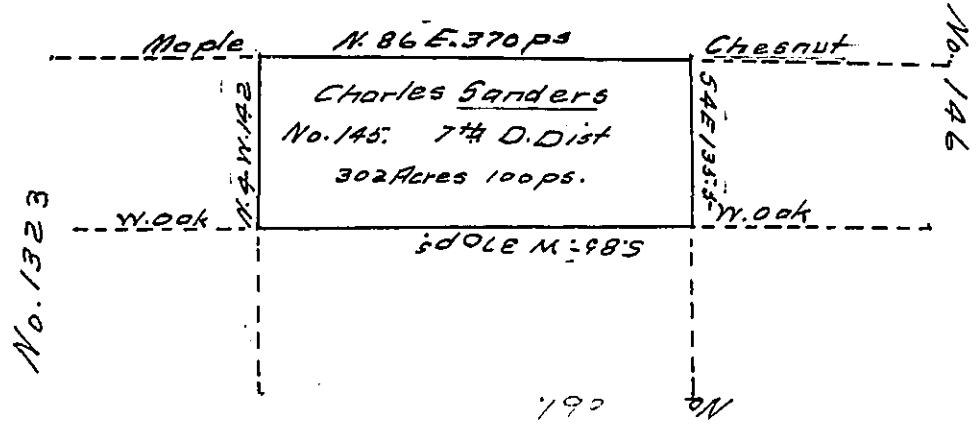


144

Samuel Rice



The above described undrawn Donation tract, Situate in Athens Township Crawford County, Containing three hundred & two acres & One and allowance & hundred perches, was surveyed for Charles Sanders on the Second of October 1835, in pursuance of his actual settlement Situate in the 7th Donation District, and originally Surveyed for 250 Acres

Eben. Felton D.S.

Jacob Spangler Esqr }  
 sur. Genl }

I hereby certify that it does not appear from the Books and documents in my office that the above described land has been, by Warrant or otherwise appropriated to any other person than the above named Charles Saunders

Eben. Felton D.S.

IN TESTIMONY that the above is a copy of the original remaining on file in the Department of Internal Affairs of Pennsylvania, made conformably to an Act of Assembly approved the 16th day of February, 1833, I have hereunto set my Hand and caused the Seal of said Department to be affixed at Harrisburg, this fifth day of January 1917.

Secretary of Internal Affairs.